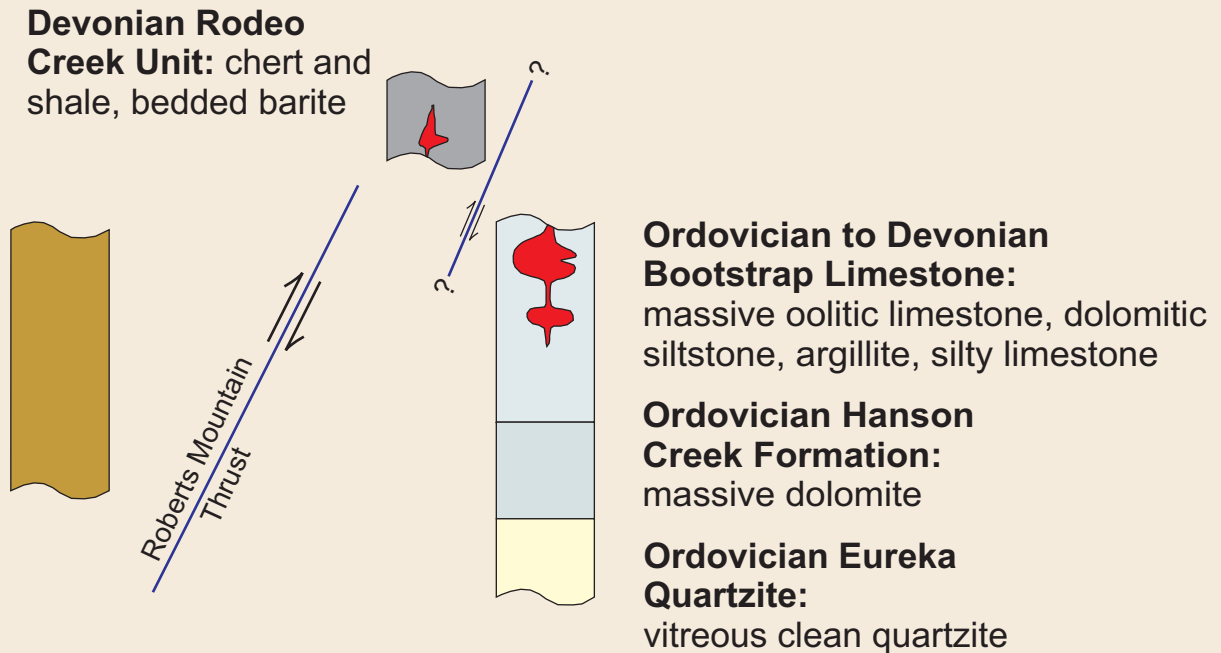


CARLIN TREND:

Late Ordovician Vinini Formation: siltstone, shale, chert, and sandstone




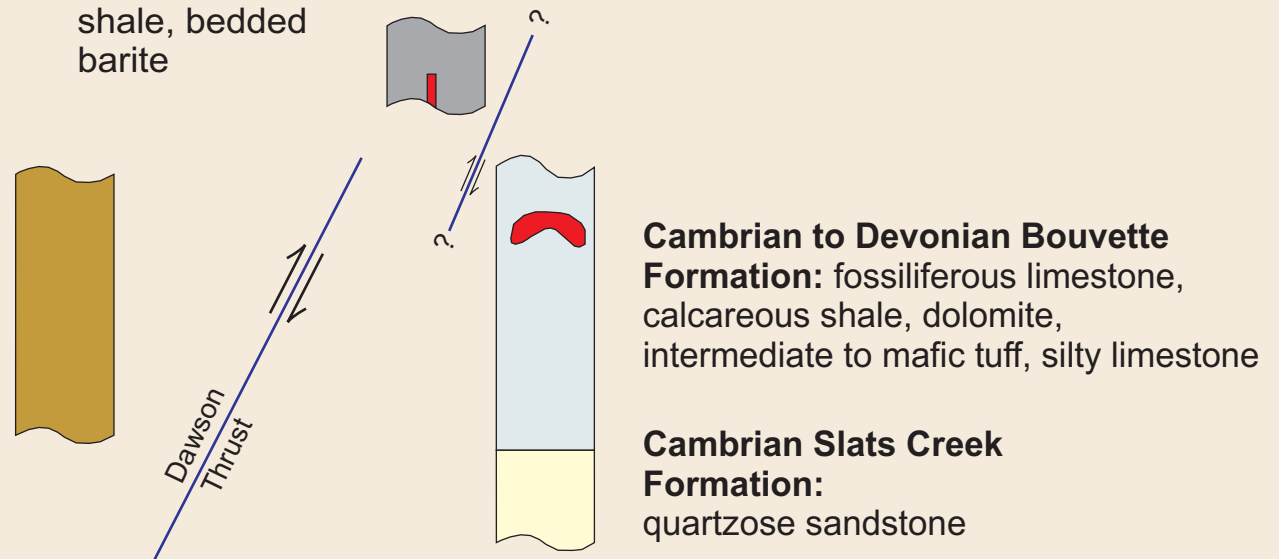
Modified from: Geology and Ore Deposits of the American Cordillera, Geological Survey of Nevada, 1996.

RAU:

Upper Proterozoic Yusezyu Formation: phyllite, meta-siltstone, marble

Devonian Earn Group: chert and shale, bedded barite

 Gold Mineralization



Modified from: Abbott, G., 1997, Geology of the upper Hart River area, eastern Ogilvie Mountains, Yukon. Bulletin, 9, 92 p.